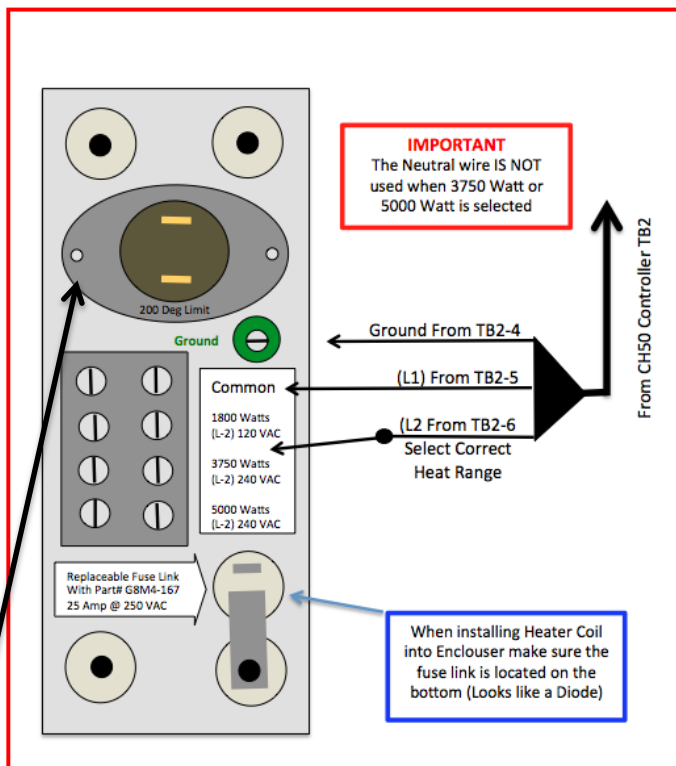


Hi Limit Replacement

When using the heater coil in a vertical configuration the Auto Limit Switch needs to be upgraded to 200 F Degree switch to eliminate short cycling.

- If heater is used in a horizontal configuration the auto temperature switch needs to remain at the factory installed 155 f degree switch.
- After upgrade before installing heater coil complete resistance test on all heater coils and make sure the readings match the chart below.
- Make sure that furnace has adequate ductwork for heater setting as specified in installation manual.
- On vertical configurations make sure their is no hidden duct work is connected to the bottom side of the furnace that hasn't been rerouted to the end of the CheapHeat™ cabinet adapter.

****BE SURE ALL POWER IS TURNED OFF BEFORE ATTEMPTING UPGRADE**



Testing

Resistance Measurements:

- 5000 to Common = 11 Ohms (+ or-) 1 Ohm
- 3750 to Common = 14 Ohms (+ or -) 1 Ohm
- 1800 to Common = 8 Ohms (+or -) 1 Ohm

Discharge Air Temperature:

- Measured air temperature inside the ALL supply air duct with in NO MORE than 3 inches away from the cabinet adapter should not exceed **160 F Degrees**.

Voltage Measurements:

Do not test one leg to ground test as follows

- 5000 to Common = 240 VAC
Hot to Hot (No Neutral used)
- 3750 to Common = 240 VAC
Hot to Hot (No Neutral used)
- 1800 to Common = 120 VAC
Hot to Neutral

1. Unplug 2 wires form Limit Switch.
2. Remove 2 screws and nuts (*back side of panel*).
3. Remove Limit Switch
4. Install new 155 F (Horz.) or 200 F (Vert.) Degree
5. Reinstall 2 screws with nuts.
6. Reconnect 2 wires (*you may need to retighten stake-on's before sliding them back on clips to make sure they are tight*).